

## Our Tower and Spire Appeal

Following a regular architectural inspection last year, 2017, we were dismayed to find that the state of our Tower and Spire was a cause for concern. After further investigation (including roped access and cherry-red-uniformed abseilers going up and down the Spire) our Grade II listed church was put on the 'At Risk' Register by English Heritage.

We are currently seeking funding of in excess of £700K for the urgent repairs and an amount toward upgrading our toilet facilities. We have so far received Phase 1 funding from the Heritage Lottery Funding to develop a bid for an overall maximum grant of £250k under the now closed 'Grants for Places of Worship England Scheme'.

This unexpected turn of events has created great opportunities for the church. It has caused us to re-evaluate the beauty and heritage of our building and given greater impetus to want to share that with our community.

### How you can help

We are in the process of seeking to fill three new voluntary roles concerned with:

- (1) setting up and running a 'Friends of St Matthew's Church' group with both local residents, businesses and other supporters
- (2) organising the external local fundraising for St Matthew's Tower and Spire Appeal (fundraising from grant making bodies handled separately)
- (3) co-ordinating the heritage activities which will flow from our Heritage Lottery Fund grant.

Please check on-line to see the role specifications to see if you might be able to help.

### How you can give

In due course you will be able to become a 'Friend of St Matthew's Church' but in the meantime any one-off or regular donations would be most welcome. Please find a form on-line which also includes a Gift Aid Declaration. If you are a UK Taxpayer signing a Gift Aid declaration makes your gift go much further at no extra cost to yourself.

### Looking to the future

We are planning to update our website to include much more information on the Appeal as soon as we can so do check back here to learn more.





The louvres  
and mullions  
showing signs  
of failure

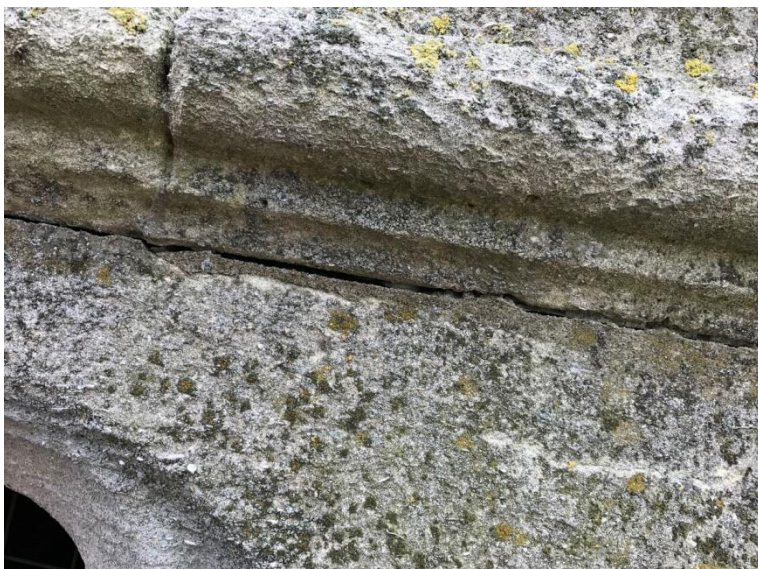






Disappearing  
mortar and  
stone

See how far  
down . . . . .



Cracks  
appearing